



2017  
**MAXIMA®**

Innovation  
that excites

### SWIPE FOR MORE INFO

Download the Interactive Brochure Hub app on your tablet and you'll have Maxima® and the whole Nissan lineup at your fingertips. Get the full product story enhanced with interactive demos and videos, plus complete info on trim levels, colors, accessories, and more.



**Nissan Interactive Brochure Hub available free on the App Store® and Google Play®**

Or go to **NissanUSA.com** to view on your desktop.



**Your peace of mind is on us. For 36 months or 36,000 miles, whichever comes first, your new Nissan is covered for the following:<sup>1</sup>**

- Flat-tire changes
- Trip Interruption benefits
- Jump starts
- Vehicle lockouts
- Emergency fuel delivery



Innovation  
that excites

Follow Nissan on:



visit **NissanUSA.com/maxima**

<sup>1</sup>Roadside Assistance and Trip Interruption available during the first 3 years or 36,000 miles (whichever occurs first) after initial new vehicle delivery. Restrictions apply. See Owner's Manual for details. The App Store® logo is a registered trademark of Apple, Inc. All rights reserved. Facebook® is a registered trademark of Facebook, Inc. Google Play™ is a registered trademark of Google, Inc. Twitter™ is a registered trademark of Twitter, Inc. YouTube® is a registered trademark of Google Inc.

PRINTED IN USA





**TRANSFORM** your drive from elevated to exhilarating at the touch of a button. Feel 300 horsepower push you deeply into a sculpted sport seat. Lean in to your favorite curve as sleek aerodynamics let you slice through the air. And after a pulse-raising ride, just as quickly return to swift, effortless motion. The 2017 Maxima,<sup>®</sup> the 4-Door Sports Car<sup>®</sup> designed to boost your excitement **INSTANTLY.**

See Maxima<sup>®</sup> in action at:  
[bit.ly/17Maximavideo](http://bit.ly/17Maximavideo)





## PURE AMBIENCE

Technically, the term is “Wow”. There’s no better way to describe it – the perfect execution of driving function with elegance and style. The quality of materials. The ideal placement of controls. The long list of luxuries you expect – and a few you hadn’t even thought of. It’s clear that a great deal of time was spent, so that every moment in the new Maxima® feels special. Wow, indeed.

Premium Ascot Leather-wrapped D-shaped steering wheel<sup>1</sup>

Zero Gravity Front Seats

Climate-controlled front seats<sup>1</sup>

Dual Panel Panoramic Moonroof<sup>1</sup>

Remote Engine Start System<sup>2</sup> with Intelligent Climate Control

Heated steering wheel<sup>1</sup>

Ambient LED lighting<sup>1</sup>

Genuine stitching on dashboard, doors and console

Nissan Maxima® Platinum shown in Cashmere Leather.

<sup>1</sup>Available feature. <sup>2</sup>State laws may apply; review local laws before using.





## CUSTOMIZED PERFORMANCE

With legendary VQ V6 power under your right foot, a next-generation CVT to keep you in the meat of the powerband, and a sport-tuned suspension to hunt down corners, Maxima® is a driver's dream come true. And with the standard Drive Mode Selector, you can switch between sport sedan and luxurious cruiser at the touch of a button.

Xtronic CVT®	300 hp, 3.5-L VQ V6 Engine	Drive Mode Selector
--------------	----------------------------	---------------------

## MAXIMA SR: AN ENTHUSIAST'S WISH LIST

Take Maxima's already athletic abilities to new heights with Maxima SR. Start with an enthusiast's wish list, including 19" machine-finished aluminum-alloy wheels, and a unique sport-tuned suspension with advanced dynamic technologies. Add in a special interior with Premium Ascot Leather appointments, Alcantara® inserts on the seats and steering wheel, and "Liquid Chrome" faceted interior trim. The result – a driving experience that's exhilarating in every sense of the word.

Alcantara® is a registered trademark of Alcantara S.p.A. Corporation.



## SEAMLESS CONNECTIVITY

Apple CarPlay™ is a smarter way to use your compatible iPhone® in the car. CarPlay™ takes many of the things you want to do with your compatible iPhone® while driving and puts them right on your car's built-in display. You can get directions, make calls, send and receive messages, and listen to music, all in a way that helps you to stay focused on the road.<sup>1</sup>

<sup>1</sup>Driving is serious business and requires your full attention. Only use feature when safe to do so. Compatible iPhone® required. Availability of specific feature is dependent upon the phone's Bluetooth® support. Please refer to your phone Owner's Manual for details. Bluetooth® word mark and logos are owned by Bluetooth SIG, Inc., and any use of such marks by Nissan is under license. See [NissanUSA.com/bluetooth](http://NissanUSA.com/bluetooth) for details. Text rates and/or data usage may apply. Services/features are provided by independent companies not within Nissan's control. Should service provider terminate/restrict service/feature, service/feature may be suspended or terminated without notice or liability to Nissan and/or its agents. Nissan not responsible for any equipment replacement or upgrades, or associated costs, that may be required for continued operation due to service/feature changes. Apple's terms and privacy statements apply. Apple CarPlay™ is a trademark of Apple, Inc. iPhone® is a registered trademark of Apple, Inc. All rights reserved. iPhone® or other external device not included.



## THE 4-DOOR SPORTS CAR®



## ADVANCED SAFETY

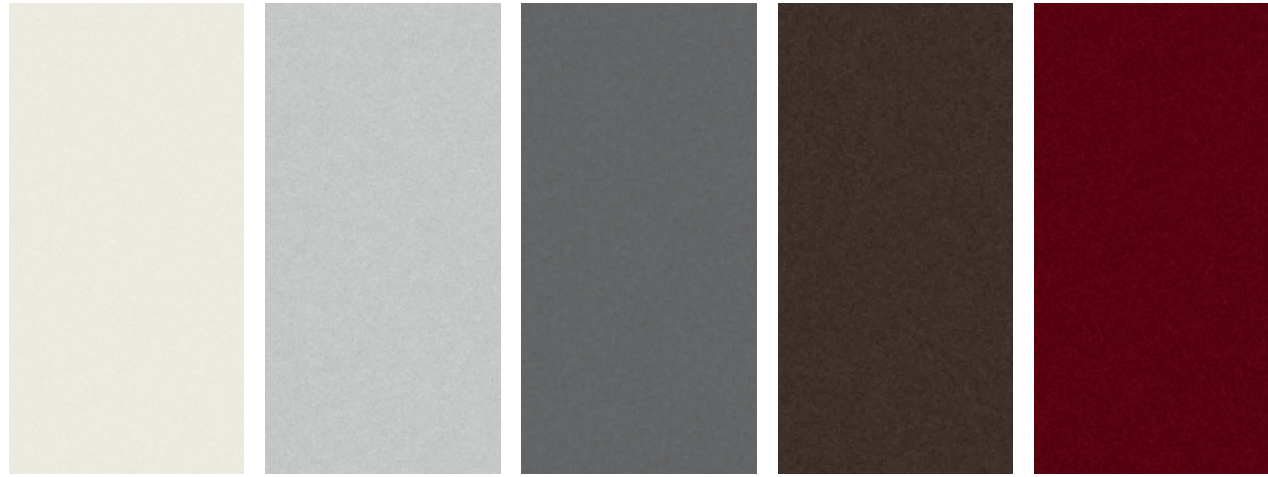
Wouldn't it be cool if your car had your back? Whether you're changing lanes on the highway or deftly maneuvering your way out of a parking spot, Maxima's available Intelligent Safety Shield Technologies offers you a suite of advanced systems that help you keep an eye out around you, watch the flow of traffic and even think ahead.

Predictive Forward Collision Warning <sup>2</sup>	Forward Emergency Braking <sup>3</sup>	Blind Spot Warning <sup>4</sup>	Rear Cross Traffic Alert <sup>5</sup>
---	--	---------------------------------	---------------------------------------

<sup>2</sup>PFCW is intended to warn you before a collision occurs; it cannot prevent a collision. Speed and other limitations apply. See Owner's Manual for details. <sup>3</sup>FEB cannot prevent accidents due to carelessness or dangerous driving techniques. It may not provide warning or braking in certain conditions. Speed limitations apply. <sup>4</sup>Blind Spot Warning is not a substitute for proper lane change procedures. The system will not prevent contact with other vehicles or accidents. It may not detect every vehicle or object around you. <sup>5</sup>Not a substitute for proper backing procedures. May not detect all moving vehicles. Speed and other limitations apply. See Owner's Manual for details.



## CHOOSE YOUR COLOR



Pearl White<sup>1</sup> QAB

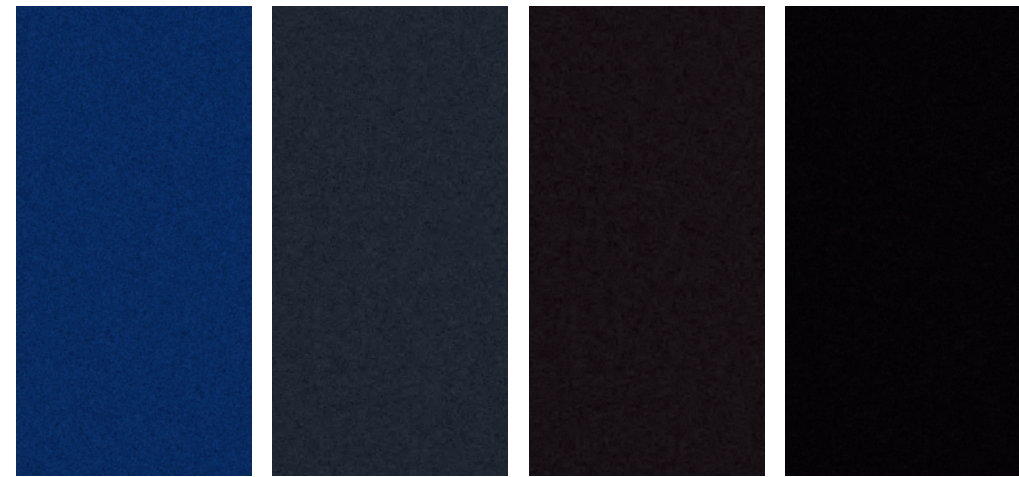
Brilliant Silver K23

Gun Metallic KAD

Forged Bronze CAT

Coulis Red NAW

	S	SV	SL	SR	ME	PLT
CASHMERE CLOTH	<input type="checkbox"/>					
CASHMERE LEATHER		<input type="checkbox"/>	<input type="checkbox"/>			<input type="checkbox"/>
CAMEL LEATHER				<input type="checkbox"/>		
CHARCOAL CLOTH	<input type="checkbox"/>					
CHARCOAL LEATHER		<input type="checkbox"/>	<input type="checkbox"/>	<input type="checkbox"/>	<input type="checkbox"/>	<input type="checkbox"/>



Deep Blue Pearl RAY

Storm Blue RBD

Bordeaux Black GAB

Super Black KH3

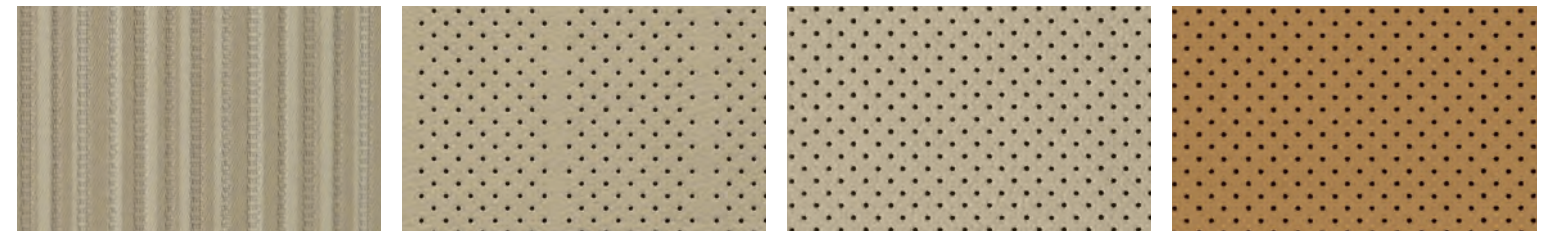
Standard  
<sup>1</sup>Extra cost option. Alcantara® is a registered trademark of Alcantara S.p.A. Corporation. Nissan has taken care to ensure that the color swatches presented here are the closest possible representations of actual vehicle colors. Swatches may vary slightly due to the printing process and whether viewed in daylight, fluorescent or incandescent light. Please see the actual colors at your local Nissan dealer.

	S	SV	SL	SR	ME	PLT
CASHMERE CLOTH	<input type="checkbox"/>					
CASHMERE LEATHER		<input type="checkbox"/>	<input type="checkbox"/>			<input type="checkbox"/>
CAMEL LEATHER				<input type="checkbox"/>		
CHARCOAL CLOTH	<input type="checkbox"/>					
CHARCOAL LEATHER		<input type="checkbox"/>	<input type="checkbox"/>	<input type="checkbox"/>	<input type="checkbox"/>	<input type="checkbox"/>

## CHOOSE YOUR INTERIOR



Nissan Maxima® Platinum shown in Cashmere Leather.

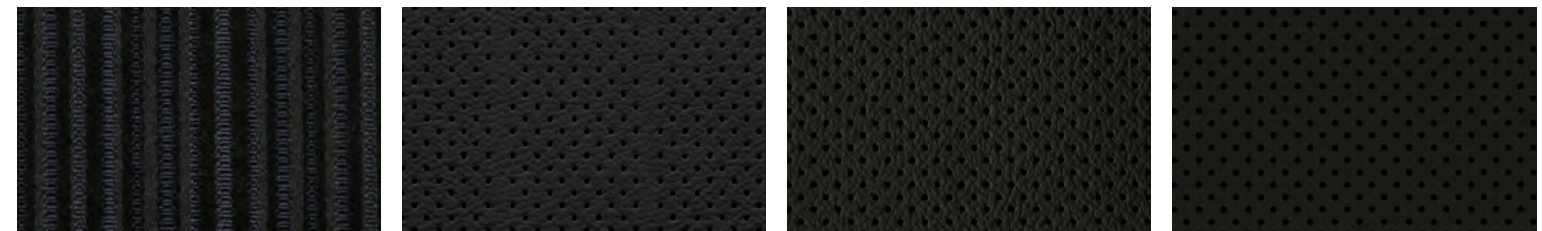


Cashmere Cloth  
S

Cashmere Leather  
SV | SL

Cashmere Leather  
PLATINUM

Camel Leather  
with Alcantara® Inserts  
SR



Charcoal Cloth  
S

Charcoal Leather  
SV | SL

Charcoal Leather  
PLATINUM

Charcoal Leather  
with Alcantara® Inserts  
SR | SR MIDNIGHT EDITION



## CHOOSE YOUR TRIM LEVEL

**S**

- 300 hp 3.5-liter V6 engine
- Xtronic CVT® (Continuously Variable Transmission)
- 18" Machine-finished aluminum-alloy wheels
- P245/45R18 V-rated all-season tires
- Drive Mode Selector with Sport or Normal modes
- LED Daytime Running Lights
- Taillights with integrated LED signature
- Advanced Drive-Assist® Display with 7.0" display
- NissanConnectSM with Navigation, featuring Apple CarPlay™<sup>1,2</sup>
- 8.0" multi-touch control color monitor
- Voice Recognition for audio and navigation
- Hands-free text messaging assistant<sup>3</sup>
- Display Commander
- RearView Monitor
- Bluetooth® Hands-Free Phone System<sup>4</sup>
- Dual Zone Automatic Temperature Control (ATC)
- HomeLink® Universal Transceiver

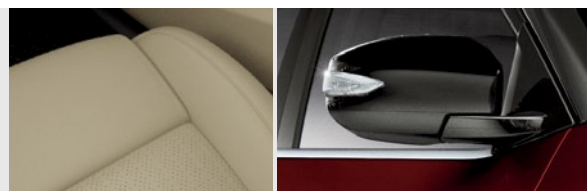
- Nissan Intelligent Key® with Push Button Ignition
- Remote Engine Start System with Intelligent Climate Control
- 8-way power driver's seat
- 4-way power front-passenger's seat
- 60/40 Split fold-down rear seatbacks with valet locking function
- Cloth seat trim with leather-wrapped steering wheel and shift knob
- "Razor Steel" faceted interior trim
- AM/FM/CD audio system
- SiriusXM® Satellite Radio<sup>5</sup>
- MP3/WMA CD playback capability
- Two illuminated USB connection ports
- Streaming audio via Bluetooth® wireless technology<sup>4</sup>
- Tire Pressure Monitoring System (TPMS) with Easy-Fill Tire Alert
- Vehicle Dynamic Control (VDC) with Traction Control System (TCS)
- Nissan Advanced Air Bag System



### **SV** INCLUDES S EQUIPMENT PLUS:

- Leather-appointed seats
- Heated front seats
- Power heated outside mirrors with LED turn signal indicators

- Front and Rear Sonar System
- Driver's seat power lumbar support
- Driver's seat manual thigh support extension



### **SL** INCLUDES SV EQUIPMENT PLUS:

- Dual Panel Power Panoramic Moonroof with one-touch open/close
- Intelligent Cruise Control (ICC)
- Adjustable ambient LED interior lighting
- Heated steering wheel
- Bose® Premium Audio System
- 11 Speakers, including Bose® Centerpoint® Surround Technology

- Active Noise Cancellation (ANC)
- Active Sound Enhancement (ASE)
- Blind Spot Warning (BSW)
- Rear Cross Traffic Alert (RCTA)
- Predictive Forward Collision Warning (PFCW)
- Forward Emergency Braking (FEB)



### **SR** INCLUDES SL EQUIPMENT PLUS:

- 19" Machine-finished aluminum-alloy wheels
- P245/40R19 W-rated all-season tires
- Paddle shifters
- Integrated Dynamics-control Module (IDM) – Active Ride Control (ARC), Active Trace Control (ATC), Active Engine Brake (AEB)
- Sport-tuned suspension
- LED low-beam headlights

- Climate-controlled front seats (heated and cooled)
- Premium Ascot Leather-appointed seats with diamond-quilted Alcantara® inserts
- Premium Ascot Leather-wrapped steering wheel with Alcantara® insert
- "Liquid Chrome" faceted interior trim
- Aluminum sport pedals
- Deletes Dual Panel Power Panoramic Moonroof



### **SR MIDNIGHT EDITION** INCLUDES SR EQUIPMENT PLUS:

- 19" Gloss black aluminum-alloy wheels
- Black sport spoiler
- Black rear diffuser



### **PLATINUM** INCLUDES SL EQUIPMENT PLUS:

- LED low-beam headlights
- Outside mirrors with reverse tilt-down feature
- Auto-dimming driver-side outside mirror
- NissanConnectSM with Navigation and Services, featuring Apple CarPlay™<sup>2,6</sup>
- Driver Attention Alert (DAA)
- Around View® Monitor with Moving Object Detection (MOD)
- Power tilt/telescoping steering column
- Rain-sensing variable intermittent windshield wipers

- Rear-window power sunshade
- Memory System – driver's seat, steering wheel and outside mirrors
- Climate-controlled front seats (heated and cooled)
- Premium Ascot Leather-appointed seats with diamond-quilted leather inserts
- Premium Ascot Leather-wrapped steering wheel
- Mahogany wood-tone faceted interior trim

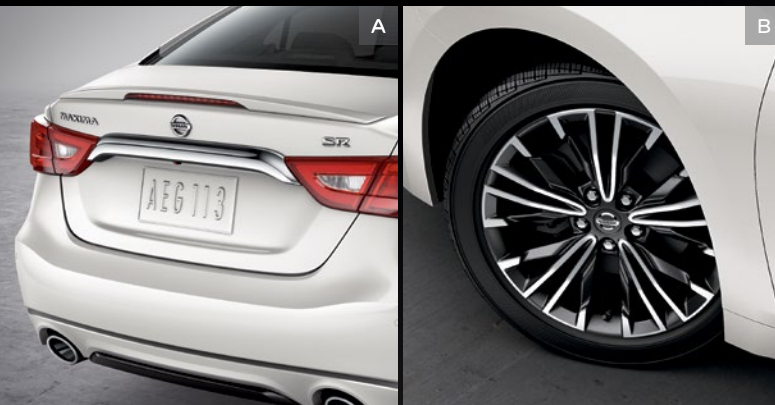


<sup>1</sup>Driving is serious business. Only use features when safe to do so. App availability is dependent upon vehicle model, trim level, packaging, and/or options. See [NissanUSA.com/connect](http://NissanUSA.com/connect) for complete app availability details. Never program while driving. GPS mapping may not be detailed in all areas or reflect current road status. Compatible smartphone required. Cellular network and GPS signals not available in all areas and/or at all times. Technology is evolving, and changes by independent companies are not within Nissan's control. Nissan is not responsible for associated costs that may be required for continued operation due to cellular network termination (including equipment upgrades, if available, or roaming charges on alternative networks) or other third party changes. Should a third party provider terminate/restrict service, service may be terminated without notice and with no liability to Nissan and its agents or affiliates. Subscription Agreement required and terms and conditions of Subscription Agreement apply. See [NissanUSA.com/connect](http://NissanUSA.com/connect) for details. Text rates and/or data usage may apply. <sup>2</sup>Driving is serious business and requires your full attention. Only use feature when safe to do so. Compatible iPhone® required. Availability of specific feature is dependent upon the phone's Bluetooth® support. Please refer to your phone Owner's Manual for details. Bluetooth® word mark and logos are owned by Bluetooth SIG, Inc., and any use of such marks by Nissan is under license. See [NissanUSA.com/bluetooth](http://NissanUSA.com/bluetooth) for details. Text rates and/or data usage may apply. Services/features are provided by independent companies not within Nissan's control. Should service provider terminate/restrict service/feature, service/feature may be suspended or terminated without notice or liability to Nissan and/or its agents. Nissan not responsible for any equipment replacement or upgrades, or associated costs, that may be required for continued operation due to service/feature changes. Apple's terms and privacy statements apply. Apple CarPlay™ is a trademark of Apple, Inc. <sup>3</sup>Use the text messaging feature after stopping your vehicle in a safe location. If you have to use the feature while driving, exercise extreme caution at all times so full attention may be given to vehicle operation. Compatible smartphone required. Text rates and/or data usage may apply. <sup>4</sup>Availability of specific features is

dependent upon the phone's Bluetooth® support. Please refer to your phone Owner's Manual for details. Bluetooth® word mark and logos are owned by Bluetooth SIG, Inc., and any use of such marks by Nissan is under license. See [NissanUSA.com/bluetooth](http://NissanUSA.com/bluetooth) for details. <sup>5</sup>Required monthly subscriptions sold separately for each available SiriusXM feature after trial period, and are continuous until you call SiriusXM to cancel. Installation costs, one-time activation fee, other fees and taxes will apply. Each SiriusXM feature availability is dependent upon vehicle model, trim level, packaging, and/or options, and may only be available in select markets. Satellite Radio U.S. service, NavWeather® service, and SiriusXM Travel Link® services (if any of the foregoing features are equipped on vehicle) available only to those 18 or older in the 48 contiguous states and D.C. Fees and programming subject to change. Subscriptions governed by Customer Agreement available at [siriusxm.com](http://siriusxm.com). ©2016 Sirius XM Radio Inc. Sirius® XM® and all related marks and logos are trademarks of Sirius XM Radio Inc. <sup>6</sup>Driving is serious business. Only use NissanConnectSM Services powered by SiriusXM® when safe to do so. Late availability for some features. Services, including automatic crash notification and SOS, are dependent upon the telematics device being in operative condition, its ability to connect to a wireless network, compatible wireless network availability, navigation map data, and GPS satellite signal receptions, the absence of which can limit or prevent the ability to reach NissanConnect Services Customer Care or receive support. Never program while driving. GPS mapping may not be detailed in all areas or reflect current road status. You are responsible for using Remote Engine Start and Remote Horn features in accordance with any laws, rules or ordinances in effect in your vehicle's location. Remote Engine Start/Stop not available on all models. Cellular network not available in all areas and/or at all times. Cellular technology is evolving and changes to cellular networks provided by independent companies are not within Nissan's or Sirius XM Radio Inc.'s control. Neither Nissan nor Sirius XM are responsible for associated costs that may be required for continued operation due to cellular network termination (including equipment upgrades, if available, or roaming charges on alternative networks). Should cellular provider terminate/restrict services, service may be terminated without notice and with no liability to Nissan, Sirius XM and/or their respective agents or affiliates. Certain services require a PIN for activation. See [NissanUSA.com/connect](http://NissanUSA.com/connect) for details. Enrollment and Subscription Agreement required to receive full suite of services. Terms and conditions of Subscription Agreement apply. Six (6) month trial period begins on your date of vehicle purchase or lease of a new Nissan; subsequently a paid subscription is required at the then current rate to continue to receive services. Text rates and/or data usage may apply. Alcantara® is a registered trademark of Alcantara S.p.A. Corporation. Bose® and Centerpoint® are registered trademarks of The Bose Corporation. HomeLink® is a registered trademark of Genex Corporation.



## CHOOSE YOUR ACCESSORIES



Every Genuine Nissan Accessory is custom-fit, custom-designed and durability-tested. Each one is also backed by Nissan's 3-year/36,000-mile (whichever occurs first) limited warranty (if installed by dealer at the time of purchase).<sup>1</sup> Plus, they can be financed when installed by the dealer at the time of purchase.

### A. Premium Spoiler

A fitting end to a breathtaking design.

### B. 18" Aluminum-alloy Wheels

Aggressively styled, exclusively for Maxima.

### C. Interior Trim Appliqués

Add some extra sport and sophistication with your choice of Carbon-fiber Look (shown) or Piano Black.

### D. Illuminated Kick Plates and Interior Accent Lighting

For a grand entrance every time. (Sold separately)

### E. All-season Floor Mats, Sport Carpeted Floor Mats, and Carpeted Floor Mats

Skip the mud, and other messes. (Sold separately)

### F. Shift Knobs

Pick your hands-down favorite.

### G. Nissan 4G WiFi & Apps<sup>2</sup>

Get on the road and online.

### H. Trunk Protector

Helps preserve and protect your cargo.

### Additional Accessories:

- Hideaway Trunk Net<sup>3</sup>
- Trunk Organizer<sup>3</sup>
- Carpeted Trunk Mat
- Shopping Bag Hooks
- And More

<sup>1</sup>Covered by Nissan's Limited Warranty on Genuine Nissan Replacement Parts, Genuine NISMO® S-Tune Parts, and Genuine Nissan Accessories for the longer of 12 months/12,000 miles (whichever occurs first) or the remaining period under the 3-year/36,000-mile (whichever occurs first) Nissan New Vehicle Limited Warranty. Terms and conditions apply. See Warranty Information Booklet for details.

<sup>2</sup>Driving is serious business and requires your full attention. Only use Nissan WiFi and Apps Services powered by Autonet Mobile when safe to do so. Only available on select models. See [Nissanwifi.com](http://Nissanwifi.com) for complete availability details. Never program while driving. GPS mapping may not be detailed in all areas or reflect current road status. Nissan WiFi and Apps Services requires compatible cellular network provided by Autonet, navigation map data, and GPS satellite signal receptions, the absence of which can limit or prevent the ability of the Nissan WiFi and Apps Services. Cellular network and GPS signals not available in all areas and/or at all times. Technology is evolving, and changes to cellular networks provided by independent companies or other third party changes that impact Nissan WiFi and Apps Services are not within Nissan's control. Should a third party or Autonet Mobile terminate or make changes that impact the service, service may be terminated without notice and Nissan shall have no liability. The Apps Services requires compatible smartphone or personal computer, not included with vehicle. Enrollment and Subscription Agreement is required to receive full suite of Nissan WiFi and Apps Services through Autonet Mobile. The 90-day trial period for Apps Services begins when the unit is registered with Autonet Mobile; subsequently the respective paid subscription for WiFi is at the then current rate to continue to receive respective services. Terms and conditions of Subscription Agreement then apply. Text rates and/or data usage may apply. <sup>3</sup>Cargo and load capacity limited by weight and distribution. Always secure all cargo.

## GENUINE NISSAN ACCESSORIES

# TURN BRAND-NEW INTO ALL YOU

For more information and to shop online for Maxima® Genuine Nissan Accessories, go to [bit.ly/17maxima-estore](http://bit.ly/17maxima-estore)



Nissan Maxima® SR shown in Pearl White with Sport Spoiler, Splash Guards, Rocker Panel Moldings, Rear Diffuser, 19" Aluminum-alloy Wheels, and External Ground Lighting.

## SPECIFICATIONS

Engine	S	SV	SL	SR	ME	PLT
VQ35DE – 3.5-liter DOHC 24-valve V6 engine	<input checked="" type="checkbox"/>	<input checked="" type="checkbox"/>	<input checked="" type="checkbox"/>	<input checked="" type="checkbox"/>	<input checked="" type="checkbox"/>	<input checked="" type="checkbox"/>
—Horsepower – 300 hp @ 6,400 rpm						
—Torque – 261 lb-ft @ 4,400 rpm						
Continuously Variable Valve Timing Control System (CVTCS) on intake and exhaust valves	<input checked="" type="checkbox"/>	<input checked="" type="checkbox"/>	<input checked="" type="checkbox"/>	<input checked="" type="checkbox"/>	<input checked="" type="checkbox"/>	<input checked="" type="checkbox"/>
Nissan Direct Ignition System	<input checked="" type="checkbox"/>	<input checked="" type="checkbox"/>	<input checked="" type="checkbox"/>	<input checked="" type="checkbox"/>	<input checked="" type="checkbox"/>	<input checked="" type="checkbox"/>
Electronic drive-by-wire throttle	<input checked="" type="checkbox"/>	<input checked="" type="checkbox"/>	<input checked="" type="checkbox"/>	<input checked="" type="checkbox"/>	<input checked="" type="checkbox"/>	<input checked="" type="checkbox"/>

Drivetrain						
Front engine/Front-wheel Drive	<input checked="" type="checkbox"/>	<input checked="" type="checkbox"/>	<input checked="" type="checkbox"/>	<input checked="" type="checkbox"/>	<input checked="" type="checkbox"/>	<input checked="" type="checkbox"/>
Xtronic CVT® (Continuously Variable Transmission) with Drive Mode Selector and manual mode	<input checked="" type="checkbox"/>	<input checked="" type="checkbox"/>	<input checked="" type="checkbox"/>	<input checked="" type="checkbox"/>	<input checked="" type="checkbox"/>	<input checked="" type="checkbox"/>
Paddle shifters				<input checked="" type="checkbox"/>	<input checked="" type="checkbox"/>	
Integrated Dynamics-control Module (IDM) – Active Ride Control (ARC), Active Trace Control (ATC), Active Engine Brake (AEB)				<input checked="" type="checkbox"/>	<input checked="" type="checkbox"/>	

Brakes						
12.60" x 1.10" front and 12.13" x 0.63" rear vented discs	<input checked="" type="checkbox"/>	<input checked="" type="checkbox"/>	<input checked="" type="checkbox"/>	<input checked="" type="checkbox"/>	<input checked="" type="checkbox"/>	<input checked="" type="checkbox"/>
4-wheel Anti-lock Braking System (ABS)	<input checked="" type="checkbox"/>	<input checked="" type="checkbox"/>	<input checked="" type="checkbox"/>	<input checked="" type="checkbox"/>	<input checked="" type="checkbox"/>	<input checked="" type="checkbox"/>
Electronic Brake force Distribution (EBD)	<input checked="" type="checkbox"/>	<input checked="" type="checkbox"/>	<input checked="" type="checkbox"/>	<input checked="" type="checkbox"/>	<input checked="" type="checkbox"/>	<input checked="" type="checkbox"/>
Brake Assist	<input checked="" type="checkbox"/>	<input checked="" type="checkbox"/>	<input checked="" type="checkbox"/>	<input checked="" type="checkbox"/>	<input checked="" type="checkbox"/>	<input checked="" type="checkbox"/>

Suspension/Chassis Bracing/Steering						
Independent strut front suspension	<input checked="" type="checkbox"/>	<input checked="" type="checkbox"/>	<input checked="" type="checkbox"/>	<input checked="" type="checkbox"/>	<input checked="" type="checkbox"/>	<input checked="" type="checkbox"/>
Independent multi-link rear suspension	<input checked="" type="checkbox"/>	<input checked="" type="checkbox"/>	<input checked="" type="checkbox"/>	<input checked="" type="checkbox"/>	<input checked="" type="checkbox"/>	<input checked="" type="checkbox"/>
Hollow-tube front and rear stabilizer bar	<input checked="" type="checkbox"/>	<input checked="" type="checkbox"/>	<input checked="" type="checkbox"/>	<input checked="" type="checkbox"/>	<input checked="" type="checkbox"/>	<input checked="" type="checkbox"/>
Sport-tuned suspension – retuned dampers, stiffer springs and larger front stabilizer bar				<input checked="" type="checkbox"/>	<input checked="" type="checkbox"/>	
Front strut tower and rear chassis reinforcement	<input checked="" type="checkbox"/>	<input checked="" type="checkbox"/>	<input checked="" type="checkbox"/>	<input checked="" type="checkbox"/>	<input checked="" type="checkbox"/>	<input checked="" type="checkbox"/>
Hydro-electric power steering (HEPS)	<input checked="" type="checkbox"/>	<input checked="" type="checkbox"/>	<input checked="" type="checkbox"/>	<input checked="" type="checkbox"/>	<input checked="" type="checkbox"/>	<input checked="" type="checkbox"/>

Wheels/Tires						
18" x 8.0" machine-finished aluminum-alloy wheels	<input checked="" type="checkbox"/>	<input checked="" type="checkbox"/>	<input checked="" type="checkbox"/>			<input checked="" type="checkbox"/>
19" x 8.0" machine-finished aluminum-alloy wheels				<input checked="" type="checkbox"/>		
19" x 8.0" gloss black aluminum-alloy wheels					<input checked="" type="checkbox"/>	
P245/45R18 V-rated all-season tires	<input checked="" type="checkbox"/>	<input checked="" type="checkbox"/>	<input checked="" type="checkbox"/>			<input checked="" type="checkbox"/>
P245/40R19 W-rated all-season tires				<input checked="" type="checkbox"/>	<input checked="" type="checkbox"/>	

Exterior Features						
LED Daytime Running Lights	<input checked="" type="checkbox"/>	<input checked="" type="checkbox"/>	<input checked="" type="checkbox"/>	<input checked="" type="checkbox"/>	<input checked="" type="checkbox"/>	<input checked="" type="checkbox"/>
Halogen headlights	<input checked="" type="checkbox"/>	<input checked="" type="checkbox"/>	<input checked="" type="checkbox"/>			
LED low-beam headlights				<input checked="" type="checkbox"/>	<input checked="" type="checkbox"/>	<input checked="" type="checkbox"/>
Smart Auto Headlights	<input checked="" type="checkbox"/>	<input checked="" type="checkbox"/>	<input checked="" type="checkbox"/>	<input checked="" type="checkbox"/>	<input checked="" type="checkbox"/>	<input checked="" type="checkbox"/>
Fog lights	<input checked="" type="checkbox"/>	<input checked="" type="checkbox"/>	<input checked="" type="checkbox"/>	<input checked="" type="checkbox"/>	<input checked="" type="checkbox"/>	<input checked="" type="checkbox"/>
Taillights with integrated LED signature	<input checked="" type="checkbox"/>	<input checked="" type="checkbox"/>	<input checked="" type="checkbox"/>	<input checked="" type="checkbox"/>	<input checked="" type="checkbox"/>	<input checked="" type="checkbox"/>
Dual mufflers with rolled chrome-tipped finishers	<input checked="" type="checkbox"/>	<input checked="" type="checkbox"/>	<input checked="" type="checkbox"/>	<input checked="" type="checkbox"/>	<input checked="" type="checkbox"/>	<input checked="" type="checkbox"/>
Black sport spoiler					<input checked="" type="checkbox"/>	
Black rear diffuser					<input checked="" type="checkbox"/>	
Dual power outside mirrors	<input checked="" type="checkbox"/>					

Standard

Exterior Features (continued)	S	SV	SL	SR	ME	PLT
Power heated outside mirrors with LED turn signal indicators		<input checked="" type="checkbox"/>	<input checked="" type="checkbox"/>	<input checked="" type="checkbox"/>	<input checked="" type="checkbox"/>	<input checked="" type="checkbox"/>
Outside mirrors with reverse tilt-down feature						<input checked="" type="checkbox"/>
Auto-dimming driver-side outside mirror						<input checked="" type="checkbox"/>
Dual Panel Power Panoramic Moonroof			<input checked="" type="checkbox"/>			<input checked="" type="checkbox"/>
Front and Rear Sonar System		<input checked="" type="checkbox"/>	<input checked="" type="checkbox"/>	<input checked="" type="checkbox"/>	<input checked="" type="checkbox"/>	<input checked="" type="checkbox"/>

Comfort/Convenience						
Advanced Drive-Assist® Display	<input checked="" type="checkbox"/>	<input checked="" type="checkbox"/>	<input checked="" type="checkbox"/>	<input checked="" type="checkbox"/>	<input checked="" type="checkbox"/>	<input checked="" type="checkbox"/>
NissanConnect <sup>SM</sup> with Navigation, featuring Apple CarPlay <sup>TM1,2</sup>	<input checked="" type="checkbox"/>	<input checked="" type="checkbox"/>	<input checked="" type="checkbox"/>	<input checked="" type="checkbox"/>	<input checked="" type="checkbox"/>	
NissanConnect <sup>SM</sup> with Navigation and Services, featuring Apple CarPlay <sup>TM1,2</sup>						<input checked="" type="checkbox"/>
8.0" multi-touch control color monitor	<input checked="" type="checkbox"/>	<input checked="" type="checkbox"/>	<input checked="" type="checkbox"/>	<input checked="" type="checkbox"/>	<input checked="" type="checkbox"/>	<input checked="" type="checkbox"/>
Voice Recognition for audio and navigation	<input checked="" type="checkbox"/>	<input checked="" type="checkbox"/>	<input checked="" type="checkbox"/>	<input checked="" type="checkbox"/>	<input checked="" type="checkbox"/>	<input checked="" type="checkbox"/>
SiriusXM® Traffic and Travel Link® <sup>3</sup>	<input checked="" type="checkbox"/>	<input checked="" type="checkbox"/>	<input checked="" type="checkbox"/>	<input checked="" type="checkbox"/>	<input checked="" type="checkbox"/>	<input checked="" type="checkbox"/>
Hands-free text messaging assistant <sup>4</sup>	<input checked="" type="checkbox"/>	<input checked="" type="checkbox"/>	<input checked="" type="checkbox"/>	<input checked="" type="checkbox"/>	<input checked="" type="checkbox"/>	<input checked="" type="checkbox"/>
Display Commander	<input checked="" type="checkbox"/>	<input checked="" type="checkbox"/>	<input checked="" type="checkbox"/>	<input checked="" type="checkbox"/>	<input checked="" type="checkbox"/>	<input checked="" type="checkbox"/>
RearView Monitor	<input checked="" type="checkbox"/>	<input checked="" type="checkbox"/>	<input checked="" type="checkbox"/>	<input checked="" type="checkbox"/>	<input checked="" type="checkbox"/>	<input checked="" type="checkbox"/>
Around View® Monitor						<input checked="" type="checkbox"/>
Bluetooth® Hands-free Phone System <sup>5</sup>	<input checked="" type="checkbox"/>	<input checked="" type="checkbox"/>	<input checked="" type="checkbox"/>	<input checked="" type="checkbox"/>	<input checked="" type="checkbox"/>	<input checked="" type="checkbox"/>
Dual Zone Automatic Temperature Control (ATC) with in-cabin microfilter and rear vents	<input checked="" type="checkbox"/>	<input checked="" type="checkbox"/>	<input checked="" type="checkbox"/>	<input checked="" type="checkbox"/>	<input checked="" type="checkbox"/>	<input checked="" type="checkbox"/>
HomeLink® Universal Transceiver	<input checked="" type="checkbox"/>	<input checked="" type="checkbox"/>	<input checked="" type="checkbox"/>	<input checked="" type="checkbox"/>	<input checked="" type="checkbox"/>	<input checked="" type="checkbox"/>
Illuminated steering wheel-mounted controls	<input checked="" type="checkbox"/>	<input checked="" type="checkbox"/>				
Cruise control				<input checked="" type="checkbox"/>	<input checked="" type="checkbox"/>	<input checked="" type="checkbox"/>
Intelligent Cruise Control (ICC)				<input checked="" type="checkbox"/>	<input checked="" type="checkbox"/>	<input checked="" type="checkbox"/>
Driver Attention Alert (DAA)						<input checked="" type="checkbox"/>
Auto-dimming inside rearview mirror	<input checked="" type="checkbox"/>	<input checked="" type="checkbox"/>	<input checked="" type="checkbox"/>	<input checked="" type="checkbox"/>	<input checked="" type="checkbox"/>	<input checked="" type="checkbox"/>
Nissan Intelligent Key® with Push Button Ignition	<input checked="" type="checkbox"/>	<input checked="" type="checkbox"/>	<input checked="" type="checkbox"/>	<input checked="" type="checkbox"/>	<input checked="" type="checkbox"/>	<input checked="" type="checkbox"/>
Remote Engine Start System with Intelligent Climate Control	<input checked="" type="checkbox"/>	<input checked="" type="checkbox"/>	<input checked="" type="checkbox"/>	<input checked="" type="checkbox"/>	<input checked="" type="checkbox"/>	<input checked="" type="checkbox"/>
Remote front windows down and trunk release via Nissan Intelligent Key®	<input checked="" type="checkbox"/>	<input checked="" type="checkbox"/>	<input checked="" type="checkbox"/>	<input checked="" type="checkbox"/>	<input checked="" type="checkbox"/>	<input checked="" type="checkbox"/>
Power-tilt/telescoping steering column						<input checked="" type="checkbox"/>
Rain-sensing variable intermittent windshield wipers						<input checked="" type="checkbox"/>
Adjustable ambient LED interior lighting			<input checked="" type="checkbox"/>	<input checked="" type="checkbox"/>	<input checked="" type="checkbox"/>	<input checked="" type="checkbox"/>
Rear-window power sunshade						<input checked="" type="checkbox"/>

Seating/Appointments						
8-way power driver’s seat	<input checked="" type="checkbox"/>	<input checked="" type="checkbox"/>	<input checked="" type="checkbox"/>	<input checked="" type="checkbox"/>	<input checked="" type="checkbox"/>	<input checked="" type="checkbox"/>
4-way power front-passenger’s seat	<input checked="" type="checkbox"/>	<input checked="" type="checkbox"/>	<input checked="" type="checkbox"/>	<input checked="" type="checkbox"/>	<input checked="" type="checkbox"/>	<input checked="" type="checkbox"/>
Memory System – driver’s seat, steering wheel and outside mirrors						<input checked="" type="checkbox"/>
Driver’s seat power lumbar support		<input checked="" type="checkbox"/>	<input checked="" type="checkbox"/>	<input checked="" type="checkbox"/>	<input checked="" type="checkbox"/>	<input checked="" type="checkbox"/>
Driver’s seat manual thigh support extension		<input checked="" type="checkbox"/>	<input checked="" type="checkbox"/>	<input checked="" type="checkbox"/>	<input checked="" type="checkbox"/>	<input checked="" type="checkbox"/>
Heated front seats		<input checked="" type="checkbox"/>	<input checked="" type="checkbox"/>			
Climate-controlled front seats (heated and cooled)				<input checked="" type="checkbox"/>	<input checked="" type="checkbox"/>	<input checked="" type="checkbox"/>
Heated steering wheel			<input checked="" type="checkbox"/>	<input checked="" type="checkbox"/>	<input checked="" type="checkbox"/>	<input checked="" type="checkbox"/>
60/40 Split fold-down rear seatbacks with valet locking function	<input checked="" type="checkbox"/>	<input checked="" type="checkbox"/>	<input checked="" type="checkbox"/>	<input checked="" type="checkbox"/>	<input checked="" type="checkbox"/>	<input checked="" type="checkbox"/>
Leather-appointed seats		<input checked="" type="checkbox"/>	<input checked="" type="checkbox"/>			
Premium Ascot Leather-appointed seats with diamond-quilted Alcantara® inserts				<input checked="" type="checkbox"/>	<input checked="" type="checkbox"/>	

Seating/Appointments (continued)	S	SV	SL	SR	ME	PLT
Premium Ascot Leather-appointed seats with diamond-quilted leather inserts						<input checked="" type="checkbox"/>
Leather-wrapped steering wheel	<input checked="" type="checkbox"/>	<input checked="" type="checkbox"/>	<input checked="" type="checkbox"/>			
Premium Ascot Leather-wrapped steering wheel with Alcantara® insert				<input checked="" type="checkbox"/>	<input checked="" type="checkbox"/>	
Premium Ascot Leather-wrapped steering wheel						<input checked="" type="checkbox"/>
Leather-wrapped shift knob	<input checked="" type="checkbox"/>	<input checked="" type="checkbox"/>	<input checked="" type="checkbox"/>	<input checked="" type="checkbox"/>	<input checked="" type="checkbox"/>	<input checked="" type="checkbox"/>
“Razor Steel” faceted trim	<input checked="" type="checkbox"/>	<input checked="" type="checkbox"/>	<input checked="" type="checkbox"/>			
“Liquid Chrome” faceted trim						
Mahogany wood-tone faceted trim						<input checked="" type="checkbox"/>
Aluminum sport pedals				<input checked="" type="checkbox"/>	<input checked="" type="checkbox"/>	

Audio/Entertainment						
AM/FM/CD audio system	<input checked="" type="checkbox"/>	<input checked="" type="checkbox"/>				
Bose® Premium Audio System			<input checked="" type="checkbox"/>	<input checked="" type="checkbox"/>	<input checked="" type="checkbox"/>	<input checked="" type="checkbox"/>
Eight speakers	<input checked="" type="checkbox"/>	<input checked="" type="checkbox"/>				
11 Speakers, including Bose® Centerpoint® Surround Technology			<input checked="" type="checkbox"/>	<input checked="" type="checkbox"/>	<input checked="" type="checkbox"/>	<input checked="" type="checkbox"/>
Active Noise Cancellation (ANC)				<input checked="" type="checkbox"/>	<input checked="" type="checkbox"/>	<input checked="" type="checkbox"/>
Active Sound Enhancement (ASE)			<input checked="" type="checkbox"/>	<input checked="" type="checkbox"/>	<input checked="" type="checkbox"/>	<input checked="" type="checkbox"/>
Two illuminated USB connection ports	<input checked="" type="checkbox"/>	<input checked="" type="checkbox"/>	<input checked="" type="checkbox"/>	<input checked="" type="checkbox"/>	<input checked="" type="checkbox"/>	<input checked="" type="checkbox"/>
SiriusXM® Satellite Radio <sup>3</sup> and HD radio	<input checked="" type="checkbox"/>	<input checked="" type="checkbox"/>	<input checked="" type="checkbox"/>	<input checked="" type="checkbox"/>	<input checked="" type="checkbox"/>	<input checked="" type="checkbox"/>
Streaming audio via Bluetooth® wireless technology <sup>6</sup>	<input checked="" type="checkbox"/>	<input checked="" type="checkbox"/>	<input checked="" type="checkbox"/>	<input checked="" type="checkbox"/>	<input checked="" type="checkbox"/>	<input checked="" type="checkbox"/>

Safety/Security						
Nissan Advanced Air Bag System with supplemental front air bags with seat belt and occupant-classification sensors	<input checked="" type="checkbox"/>	<input checked="" type="checkbox"/>	<input checked="" type="checkbox"/>	<input checked="" type="checkbox"/>	<input checked="" type="checkbox"/>	<input checked="" type="checkbox"/>
Driver and front-passenger seat-mounted side-impact supplemental air bags	<input checked="" type="checkbox"/>	<input checked="" type="checkbox"/>	<input checked="" type="checkbox"/>	<input checked="" type="checkbox"/>	<input checked="" type="checkbox"/>	<input checked="" type="checkbox"/>
Roof-mounted curtain supplemental air bags with rollover sensor for side-impact and roll-over head protection for front and rear-seat outboard occupants	<input checked="" type="checkbox"/>	<input checked="" type="checkbox"/>	<input checked="" type="checkbox"/>	<input checked="" type="checkbox"/>	<input checked="" type="checkbox"/>	<input checked="" type="checkbox"/>
Vehicle Dynamic Control (VDC) with Traction Control System (TCS)	<input checked="" type="checkbox"/>	<input checked="" type="checkbox"/>	<input checked="" type="checkbox"/>	<input checked="" type="checkbox"/>	<input checked="" type="checkbox"/>	<input checked="" type="checkbox"/>
Blind Spot Warning (BSW)			<input checked="" type="checkbox"/>	<input checked="" type="checkbox"/>	<input checked="" type="checkbox"/>	<input checked="" type="checkbox"/>
Rear Cross Traffic Alert (RCTA)			<input checked="" type="checkbox"/>	<input checked="" type="checkbox"/>	<input checked="" type="checkbox"/>	<input checked="" type="checkbox"/>
Moving Object Detection (MOD)						<input checked="" type="checkbox"/>
Predictive Forward Collision Warning (PFCW)				<input checked="" type="checkbox"/>	<input checked="" type="checkbox"/>	<input checked="" type="checkbox"/>
Forward Emergency Braking (FEB)				<input checked="" type="checkbox"/>	<input checked="" type="checkbox"/>	<input checked="" type="checkbox"/>
LATCH System (Lower Anchors and Tethers for Children)	<input checked="" type="checkbox"/>	<input checked="" type="checkbox"/>	<input checked="" type="checkbox"/>	<input checked="" type="checkbox"/>	<input checked="" type="checkbox"/>	<input checked="" type="checkbox"/>
Tire Pressure Monitoring System (TPMS) with Easy-Fill Tire Alert	<input checked="" type="checkbox"/>	<input checked="" type="checkbox"/>	<input checked="" type="checkbox"/>	<input checked="" type="checkbox"/>	<input checked="" type="checkbox"/>	<input checked="" type="checkbox"/>

## DIMENSIONS/CAPACITIES

Exterior Dimensions – Inches						
Wheelbase						<b>109.3</b>
Overall length/width/height						<b>192.8/73.2/56.5</b>
Interior Dimensions – Inches						
Head room (front/rear)						<b>39.4/36.7</b>
Head room with Dual Panel Moonroof (front/rear)						<b>38.9/35.8</b>
Leg room (front/rear)						<b>45.0/34.2</b>

## DIMENSIONS/CAPACITIES (CONTINUED)

Interior Dimensions – Inches (continued)						
Hip room (front/rear)						<b>54.2/53.5</b>
Shoulder (room front/rear)						<b>56.7/55.7</b>

Capacities						
Seating capacity						<b>5</b>
EPA interior passenger volume without moonroof (cu. ft.)						<b>98.6</b>
EPA interior passenger volume with moonroof (cu. ft.)						<b>96.9</b>
EPA cargo volume (cu. ft.)						<b>14.3</b>
Fuel tank (gals.)						<b>18.0</b>

2017 EPA Fuel Economy Estimates							
	City/Highway/Combined MPG	S	SV	SL	SR	ME	PLT
		<b>21/30/25</b>	<b>21/30/25</b>	<b>21/30/25</b>	<b>21/30/25</b>	<b>21/30/25</b>	<b>21/30/25</b>
		— Actual mileage may vary with driving conditions – use for comparison only.					

<sup>1</sup>Driving is serious business. Only use NissanConnect<sup>SM</sup> Services powered by SiriusXM<sup>®</sup> when safe to do so. Late availability for some features. Services, including automatic crash notification and SOS, are dependent upon the telematics device being in operative condition, its ability to connect to a wireless network, compatible wireless network availability, navigation map data, and GPS satellite signal receptions, the absence of which can limit or prevent the ability to reach NissanConnect Services Customer Care or receive support. Never program while driving. GPS mapping may not be detailed in all areas or reflect current road status. You are responsible for using Remote Engine Start and Remote Horn features in accordance with any laws, rules or ordinances in effect in your vehicle’s location. Remote Engine Start/Stop not available on all models. Cellular network not available in all areas and/or at all times. Cellular technology is evolving and changes to cellular networks provided by independent companies are not within Nissan’s or Sirius XM Radio Inc.’s control. Neither Nissan nor Sirius XM are responsible for associated costs that may be required for continued operation due to cellular network termination (including equipment upgrades, if available, or roaming charges on alternative networks). Should cellular provider terminate/restrict services, service may be terminated without notice and with no liability to Nissan, Sirius XM and/or their respective agents or affiliates. Certain services require a PIN for activation. See **NissanUSA.com/connect** for details. Enrollment and Subscription Agreement required to receive full suite of services. Terms and conditions of Subscription Agreement apply. Six (6) month trial period begins on your date of vehicle purchase or lease of a new Nissan; subsequently a paid subscription is required at the then current rate to continue to receive services. Text rates and/or data usage may apply. <sup>2</sup>Driving is serious business and requires your full attention. Only use feature when safe to do so. Compatible iPhone<sup>®</sup> required. Availability of specific feature is dependent upon the phone’s Bluetooth<sup>®</sup> support. Please refer to your phone Owner’s Manual for details. Bluetooth<sup>®</sup> word mark and logos are owned by Bluetooth SIG, Inc, and any use of such marks by Nissan is under license. See **NissanUSA.com/bluetooth** for details. Text rates and/or data usage may apply. Services/features are provided by independent companies not within Nissan’s control. Should service provider terminate/restrict service/feature, service/feature may be suspended or terminated without notice or liability to Nissan and/or its agents. Nissan not responsible for any equipment replacement or upgrades, or associated costs, that may be required for continued operation due to service/feature changes. Apple’s terms and privacy statements apply. Apple CarPlay<sup>™</sup> is a trademark of Apple, Inc. <sup>3</sup>Required monthly subscriptions sold separately for each available SiriusXM feature after trial period, and are continuous until you call SiriusXM to cancel. Installation costs, one-time activation fee, other fees and taxes will apply. Each SiriusXM feature availability is dependent upon vehicle model, trim level, packaging, and/or options, and may only be available in select markets. Satellite Radio U.S. service, NavWeather<sup>®</sup> service, and SiriusXM Travel Link<sup>®</sup> services (if any of the foregoing features are equipped on vehicle) available only to those 18 or older in the 48 contiguous states and D.C. Fees and programming subject to change. Subscriptions governed by Customer Agreement available at **siriusxm.com**. ©2016 Sirius XM Radio Inc. Sirius<sup>®</sup>, XM<sup>®</sup> and all related marks and logos are trademarks of Sirius XM Radio Inc. <sup>4</sup>Use the text messaging feature after stopping your vehicle in a safe location. If you have to use the feature while driving, exercise extreme caution at all times so full attention may be given to vehicle operation. Compatible smartphone required. Text rates and/or data usage may apply. <sup>5</sup>Availability of specific features is dependent upon the phone’s Bluetooth<sup>®</sup> support. Please refer to your phone Owner’s Manual for details. Bluetooth<sup>®</sup> word mark and logos are owned by Bluetooth SIG, Inc, and any use of such marks by Nissan is under license. See **NissanUSA.com/bluetooth** for details. HomeLink<sup>®</sup> is a registered trademark of Gentex Corporation. Alcantara<sup>®</sup> is a registered trademark of Alcantara S.p.A. Corporation. Bose<sup>®</sup> and Centerpoint<sup>®</sup> are registered trademarks of The Bose Corporation. iPod<sup>®</sup> is a registered trademark of Apple, Inc. All rights reserved. iPod<sup>®</sup> or other external device not included. This brochure is intended for general descriptive and informational purposes only. It is subject to change and does not constitute an offer, representation or warranty (express or implied) by Nissan North America, Inc. Interested parties should confirm the accuracy of any information in this brochure as it relates to a vehicle directly with Nissan North America, Inc. before relying on it to make a purchase decision. Nissan North America, Inc. reserves the right to make changes, at any time, without prior notice, in prices, colors, materials, equipment, specifications, and models and to discontinue models or equipment. Due to continuous product development and other pre- and post-production factors, actual vehicle, materials and specifications may vary from this brochure. Some vehicles shown with optional equipment. See the actual vehicle for complete accuracy. Availability and delivery times for particular models or equipment may vary. Specifications, options and accessories may differ in Hawaii, U.S. territories and other countries. For additional information on availability, options or accessories, see your Nissan dealer or contact Nissan North America, Inc. At **NissanUSA.com**, you’ll find virtual product demonstrations, a way to “build your own Nissan,” a dealer locator, and more information about key Nissan support services. Or if you’d prefer, call **1-800-NISSAN-3** for answers to specific questions about Maxima<sup>®</sup> or any other Nissan vehicle. The Nissan names, logos, product names, feature names, and slogans